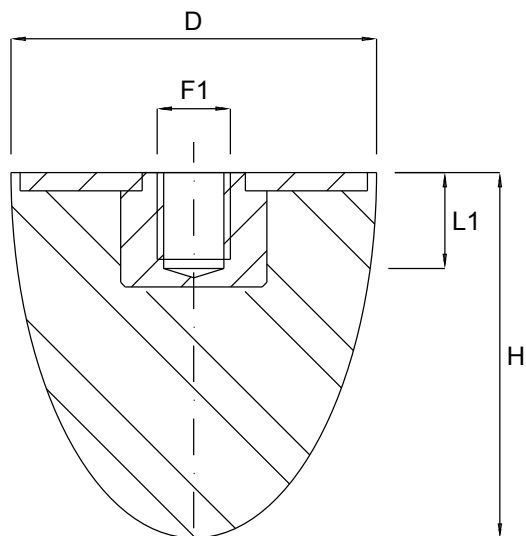


## ANTIVIBRANTI PARABOLICI TIPO PF



CODICE	D mm	H mm	F1	L1 mm	Shore A	Max C. daN	K daN/mm	Def. mm	Confezioni pz
PBE2024660	20	24	M6	6	60	40	4,1	10	100
PBE2520660	25	20	M6	6	60	120	12,2	10	100
PBE3015660	30	15	M6	6	60	120	12,2	10	50
PBE3015860	30	15	M8	8	60	120	12,2	10	50
PBD3030E60	30	30	M8	8	60	150	10,2	15	50
PBE3036860	30	36	M8	8	60	150	7,7	20	50
PBE4030860	40	30	M8	8	60	210	14,3	15	50
PBE4060860	40	60	M8	8	60	280	11,4	25	50
PBE50501060	50	50	M10	10	60	400	13,6	30	25
PBE50581060	50	58	M10	10	60	400	11,7	35	25
PBE5067860	50	67	M8	8	60	300	10,2	30	25
PBE50671060	50	67	M10	10	60	300	10,2	30	25
PBE60601260	60	60	M12	12	60	229,2	19,5	12	25
PBE75891260	75	89	M12	12	60	800	16,3	50	10
PBE95801660	95	80	M16	16	60	1100	28,1	40	5
PBE100831660	100	83	M16	16	60	1300	33,2	40	5
PBE1151361660	115	136	M16	16	60	1600	23,3	70	5

### NOTE

Puffer paracolpo, forma E, DIN95364